



**DIVI® FAST TRACK**  
Quick Ship Program

**OFFICE FURNITURE**  
**WAREHOUSE**  
NEW & USED OFFICE FURNITURE

**AIS**



## PRACTICAL FURNITURE IMPRACTICALLY FAST.

The Divi Fast Track program is designed for those who need beautiful yet practical workstations quickly. Our open plan environments can feature fixed height or height adjustable tables – along with a range of seating solutions. You'll find all you need here.

Best of all, we'll ship your complete offices in just weeks. Your business will be up and running in no time.

**OFFICE FURNITURE**  
**WAREHOUSE**  
NEW & USED OFFICE FURNITURE

*We will*  
**NEVER BE  
UNDERSOLD!!!**

Divi Fast Track products ship in 10 business days.



# ESSENTIALS FOR ESSENTIALLY EVERYONE.

Divi delivers on all the positives of a streamlined 2 inch panel-based solution, with remarkable flexibility and simplicity. There's a Divi Fast Track solution for almost every workspace need, making it the smart, scalable answer for individuals and teams across your organization. From highly collaborative offices to virtually distraction-free workstations, all the essentials are possible here.

Divi Fast Track products ship in 10 business days.

# VALUE PRICED. VALUE BASED.

The Divi Fast Track program includes a range of design solutions to meet both your team's needs and your budget requirements.

Explore glass panels and screens, storage options, height adjustable tables, accessories – and a range of task and guest seating.

Consider giving teams greater choice with height adjustability. Divi is designed to readily accommodate height adjustable tables, ensuring posture shifts can be supported throughout the day. There's great value in that.

**OFFICE FURNITURE  
WAREHOUSE**  
NEW & USED OFFICE FURNITURE

*We will*  
**NEVER BE  
UNDERSOLD!!!**



Divi Fast Track products ship in 10 business days.



# TIME MATTERS.

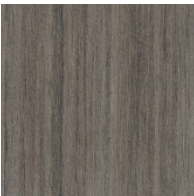
You'll appreciate the efficiency of the Divi Fast Track program on all fronts. From designing with a range of workstation choices to selecting from a refreshed palette of colors to shipping and installation, speed is at the heart here.

Need to move, add or change your workstations? We know time is money and that's when you'll discover how easily and quickly Divi can support your organization's shifting needs.

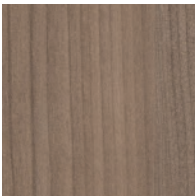
Divi Fast Track products ship in 10 business days.

# MATERIALS & FINISHES


### Laminate Finish Options




Absolute Acajou T




Aimtoo Savatre




Looks Likatre T



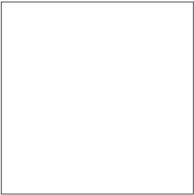
Maritime Dune T




Midwest Maple




Summer Drops



True White




Trytoo Savatre T




White Chocolate T

**NOTE:**  
Matching edge detail available for all laminate options above.  
T = Indicates a textured laminate.


### Paint Finish Options



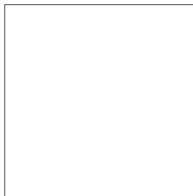
Black



Grey Value 1



Medium Tone



Satin White

### Day-to-Day and E Series Height Adjustable Tables - Paint Finish Options



Black



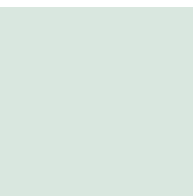
Metallic Silver



Satin White

**NOTE:** All Divi Fast Track worksurfaces and height adjustable tables are standard with 2mm edge detail.

### Glass Finish Option



Clear

### Pull Handle Options



Rectangle Pull

### Volker Cube and Ped Cushion Upholstery Options



Mirador Bahamas



Mirador Lake Blue



Mirador Light Green



Mirador Midnight Black



Mirador Navy Blue



Mirador Neutral



Mirador Pacific



Mirador Red



Mirador Rusty



Mirador Stone



Mirador Storm

**NOTE:**  
Mirador is standard as an antimicrobial upholstery.  
Available on ped cushion and Volker Cubes only.  
Mirador is offered on Divi Fast Track for pedestal cushions and Volker cubes only.

### Laminate Edgeband Options

Color Name	Color Code
Absolute Acajou	AA
Aimtoo Savatre	AS
Looks Likatre	LK
Maritime Dune	MD
Midwest Maple	MM
Summer Drops	SD
True White	TW
Trytoo Savatre	TS
White Chocolate	WC

### Paint Edgeband Options

Color Name	Color Code
Black	BK
Grey Value 1	GV-1
Medium Tone	MT
Satin White	SW

### Paint Finish Options Grid

Color Name	Divi Panels	Divi Base	L Series Storage	Day-to-Day Table Bases	E Series Table Bases
Black	•	•	•	•	•
Grey Value 1	•	•	•	N/A	N/A
Medium Tone	•	•	•	N/A	N/A
Metallic Silver	N/A	N/A	•	•	•
Satin White	•	•	•	•	•

Please request samples to view before specifying, as the colors, materials and finishes featured within our printed and electronic literature may vary due to the printing processes and/or viewing monitors used. Availability of finishes and materials shown may vary due to manufacturers' lifecycle and management.

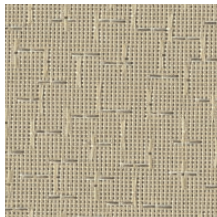


# MATERIALS & FINISHES

## Panel Fabric Options



Avenue  
Dusk



Avenue  
Park Place



Cape Cod  
Chatham



Cape Cod  
Falmouth



Cape Cod  
Harwich



Cape Cod  
Hyannis



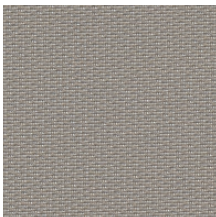
Cape Cod  
Jet



Cape Cod  
Meadow



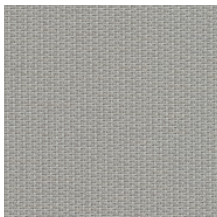
Cape Cod  
Nantucket



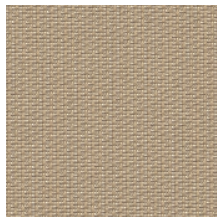
Engage  
Denim



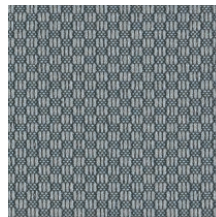
Engage  
Neutral



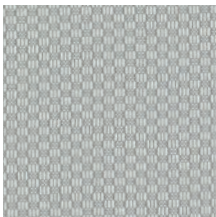
Engage  
Rain Cloud



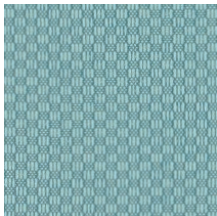
Engage  
Toffee



New England  
Cambridge



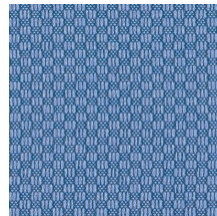
New England  
Concord



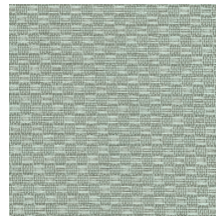
New England  
Dixville Notch



New England  
Ivory



New England  
Lexington

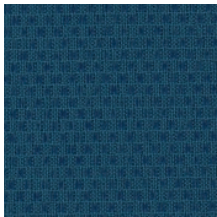


New England  
Moss



New England  
Newton

## Panel Fabric Options



New England  
Night



New England  
Whale



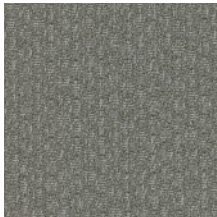
New England  
York



Rainfall  
Bliss



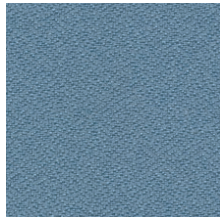
Rainfall  
Shore



Rainfall  
Sundown



Rainfall  
Twilight



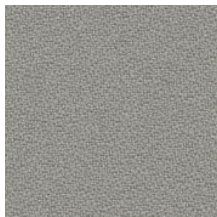
Simplicity  
Blue Smooth



Simplicity  
Chamoise



Simplicity  
Gray Blue



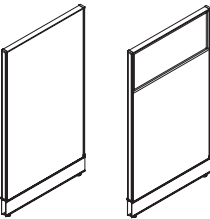
Simplicity  
Stone



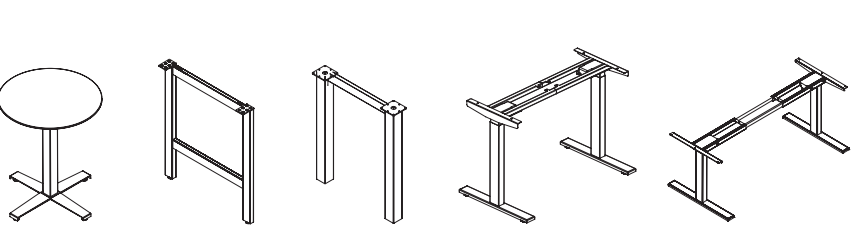
Twizzle  
Tan

# EXPLORING THE QUICK SHIP OFFERING

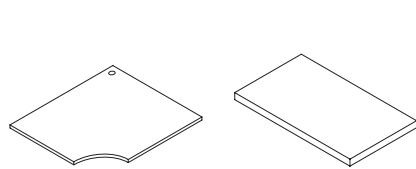
Panels



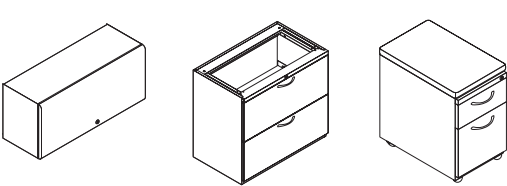
Tables and Leg Kits



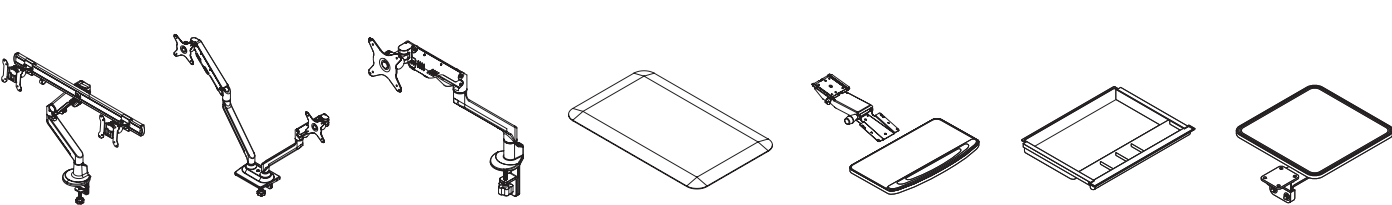
Workspace Tops



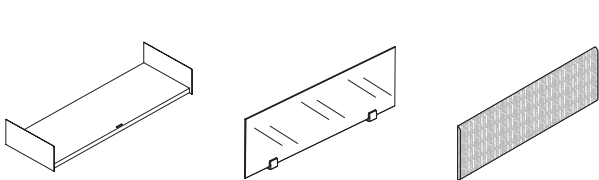
Files and Storage



Accessories (Monitor Arms, Anti-Fatigue Mats, Keyboard Trays, Pencil Drawers and More)



Shelves, Screens and Tackboards



# OPTIONS FOR ANY ENVIRONMENT & BUDGET

Jumpstart your project with our idea starters online.



Idea Starter 2



Idea Starter 3



Idea Starter 5



Idea Starter 6



Idea Starter 7



Idea Starter 8



Idea Starter 14



Idea Starter 18

# FEATURED FABRICS & FINISHES

## Cover

**Workstation Worksurface:** Maritime Dune **Panel Fabric:** Engage Rain Cloud  
**Workstation Paint & Base:** Grey Value I **Height Adjustable Table Legs:**  
Day-to-Day Height Adjustable Table - Satin White **Support Legs:** Satin White  
**Pedestals:** GV1 **Table Worksurface:** True White **Table Base:** Grey Value I  
**Volker Cube:** Mirador Navy Blue **Seating:** Devens Express – Black/Black

## Page 2-3

**Workstation Worksurface:** True White Laminate **Height Adjustable Table Bases:**  
Satin White **Overhead & L Series Steel Pedestals with Rectangular Pull:** Satin  
White **Trim:** Medium Tone **Panel Fabric:** Simplicity | Chamois & Stone **Seating:**  
Bolton Express | Black/Black

## Page 4-5

**Workstation Worksurface:** Looks Likatre **Panel Fabric:** Engage Avenue Dusk –  
Inside Accent – New England Lexington **Workstation Paint & Base:** Satin White  
**Height Adjustable Table Legs:** E Series Height Adjustable Table - Metallic Silver  
**Pedestals:** Satin White with Mirador - Light Green **Seating:** Devens Express –  
Grey/Grey

## Page 6-7

**Worksurface:** White Chocolate **Panel Fabric:** Cape Cod Chatham **Workstation**  
**Paint & Base:** Satin White **Height Adjustable Table Legs:** E Series Height  
Adjustable Table - Metallic Silver **Pedestals:** Satin White with Mirador - Lake  
Blue **Seating:** Devens Express – Black/Black

## Page 8-9

**Worksurface:** Aimtoo Savatre **Panel Fabric:** New England Lexington  
**Workstation Paint & Base:** Satin White **Support Legs:** Satin White  
**Lateral Files:** Satin White **Seating:** Bolton Mid Back Express – Black/Black

**OFFICE FURNITURE**  
**WAREHOUSE**  
NEW & USED OFFICE FURNITURE

*We will*  
**NEVER BE**  
**UNDERSOLD!!!**

[www.OfficeFurnitureTupelo.com](http://www.OfficeFurnitureTupelo.com)

117 2nd Street    Tupelo, MS 38801

(662)566-2439

Serving the Southeast USA



**AIS**



**MATRIX™**  
Panel-Based System

**OFFICE FURNITURE**  
**WAREHOUSE**  
NEW & USED OFFICE FURNITURE

**AIS**



# ENTER THE **MATRIX**

---

Take a seat and experience a new dimension of collaboration and productivity. Matrix creates sophisticated, cost-efficient, and super-flexible work spaces that stack up and stand the test of time—in open plan areas, private offices, reception areas, conference rooms, and beyond.



## PANEL-BASED PERFECTION

Matrix isn't your ordinary panel-based system. Not even close. Its modular foundation lets the system grow and evolve. Today's workstation can be tomorrow's private office. A setting for four can expand to accommodate ten. Matrix doesn't just deal with change. It thrives on it.

# STACK THE BENEFITS IN YOUR FAVOR

Matrix's stackable design lets you build the environment that's just right for the people, place, need, and technology. And, with plenty of tile options to choose from—fabric acoustical, laminate, whiteboard, tool rail, embossed steel, perforated steel, painted steel, and glass—you can choose Matrix's finish, then swap it out for another on a whim.

**OFFICE FURNITURE**  
**WAREHOUSE**  
NEW & USED OFFICE FURNITURE

*We will*  
**NEVER BE  
UNDERSOLD!!!**





# GO WITH THE WORKFLOW

The workplace can't afford to be a one-trick pony. It needs different places for different purposes. That's why Matrix's statement of line is remarkably broad. It fosters a high level of flow between departments—whether it's buzzing and collaborative or it requires more peace and quiet.



# DESIGNED TO INTEGRATE

With over a decade of proven performance, Matrix seamlessly coordinates with our Calibrate® Series, Day-to-Day™ Tables, L Series, and more. It also shares surfaces and finishes with Aloft® and Oxygen® Desking Systems. Coordinated beyond compare, Matrix sets a confident tone and empowers everyone's best work.

OFFICE FURNITURE  
WAREHOUSE  
NEW & USED OFFICE FURNITURE

*We will*  
**NEVER BE  
UNDERSOLD!!!**



## STRONG AS STEEL

Need a system you can reconfigure time and again with ease? Good, because Matrix is one of the strongest full-steel-frame systems out there, with a foundation that doesn't quit on the job. Sophisticated on the outside. Strong on the inside.

# POWERFUL PANELS

The Matrix electrical system has ample capacity and substantial design flexibility. Matrix provides electrical and data cabling holes at every 8 inches of height, forming up to 10 laterally continuous raceway channels on an 82 inch high panel. Electrical and data may be run through the panel frames at every height and multiple powerways can be positioned from the bottom of the panel up to 114 inches in height, providing extensive cabling capacity and power access placement options. Power and data can be consolidated in a single power tile, offering up to 3 duplexes and 6 Data Jack Housings in a single location.

- Powerways providing access to an 8 wire or 10 wire electrical system may be mounted at any height from base to beltline or above. Every 8 inch power access tile can accommodate two powerways stacked to allow access for up to four duplex outlets and/or data jack housings.
- A true unimpeded "lay in" topcap channel accommodates up to 16 category 6 cables in addition to the internal raceways. Stack frames may be retrofit over lay in channel without removing existing cables. Matrix sets a new industry standard for electrical and data capacity, flexibility, and access.
- Internal covered cable compartments can be ordered to separate secure data lines from non-secure lines.
- Triple channel powerpoles can each accommodate multiple feeds and dozens of data cables.
- Matrix access tiles have a universal data housing interface and can accommodate any manufacturers' data device housings, including Hubbell™, Ortronics™, Amp™, Leviton™, and others.



# A FULL MATRIX OF CONFIGURATIONS

Matrix serves a world of purposes, but don't take our word for it. Take a look at some of our favorite configurations. Then go dream up one of your own. Consider the Matrix Gallery panels and screens to support user's privacy and wellness.



# QUALITY & DETAILS



2mm Edge



Reverse Knife Edge



Effortless Integration with Day-to-Day™ Tables



Pair with Calibrate® Series Storage

The Matrix system offers many choices, ensuring workstations can meet the unique needs of users. Whether it's a variety of worksurface supports or integration with our Calibrate Series laminate solutions, it's easy to design highly functional, highly personal work environments with Matrix.



Matrix Fit (Floor-to-Ceiling)



Rectangular Pull



L-Pull



Screens: Consider adding a screen to support user's privacy and wellness



Coat Hook on Panel



Bar Pull



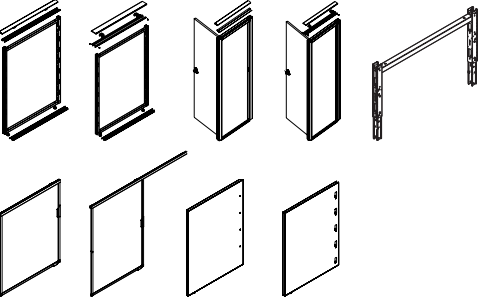
Loop Pull



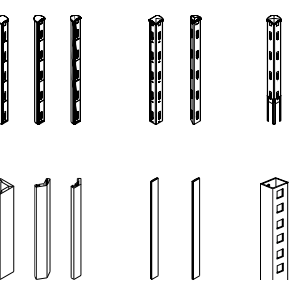
Specify Calibrate Series storage on feet for a lighter look

# EXPLORE THE OFFERING

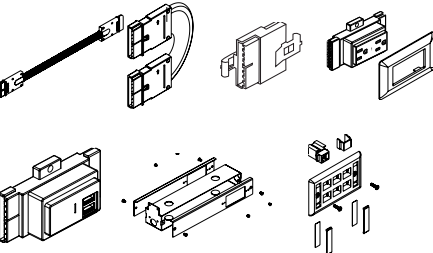
## Frames



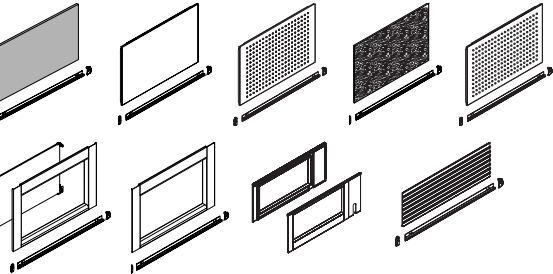
## Connectors



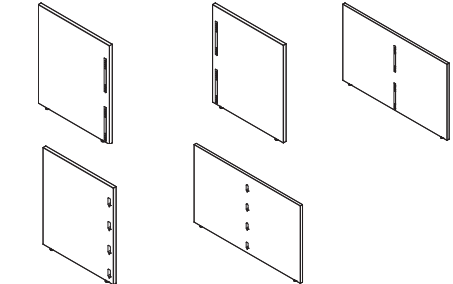
## Electrical



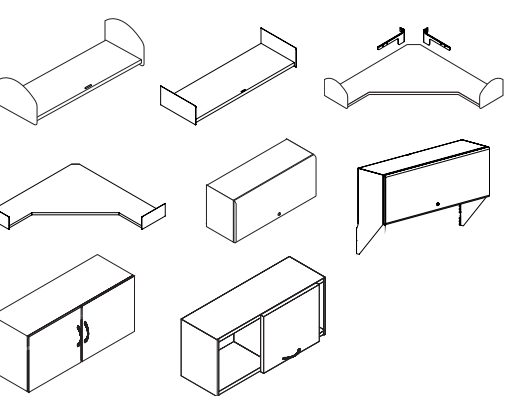
## Tiles



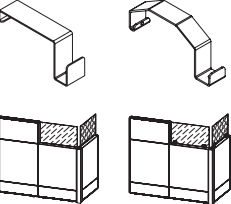
## Gallery Panels



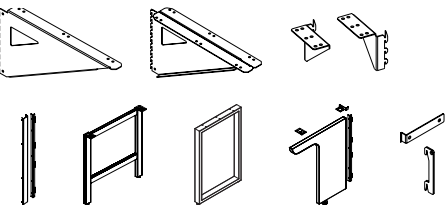
## Storage



## Accessories



## Support



Visit [ais-inc.com/products/matrix](https://ais-inc.com/products/matrix) to view the complete statement of line and learn more.

# MATERIALS & FINISHES

Laminates\*

 Absolute Acajou	 Aimtoo Savatre	 Black
 Brazilwood	 Cabinet Almond	 Chalk
 Corporate Walnut	 Dark Rum Cherry	 Grand Cherry
 Leave Likatre	 Linen	 Looks Likatre
 Maritime Dune	 Midwest Maple	 Nightfall
 Paris White Potteryware	 Recon Oak	 Storm
 Summer Drops	 Titanium EV	 True White
 Trytoo Savatre	 White Chocolate	

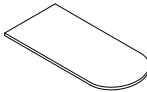
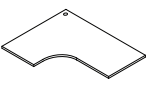
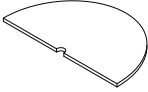
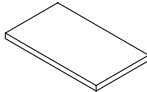
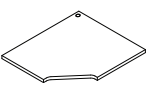
\*Laminates can be applied to worksurfaces and panels.

Paints

 Black	 Chalk	 Dark Tone
 Grey Value 1	 Inner Tone	 Light Tone
 Medium Tone	 Satin White	 Warm Brown 1

Worksurfaces

Many different worksurfaces are available.

 D-Tops	 Extended Curvilinear	 Matrix Spanner Half Moon
 Rectangular	 Rectilinear Corner	

# FEATURED FABRICS & FINISHES

Cover

**Calibrate & Worksurfaces:** Looks Likatre **Matrix Trim:** Lite Silver **Glass:** Grey **Matrix Tiles (Interior):** Mayer Fedora – Indigo **Matrix Tiles (Exterior):** Guilford of Maine Whisper – Cloud **Natick Seating:** Grey Graduated Striped Mesh back and LUUM Navigate – Pumice Upholstered Seats **Volker Cubes:** Brentano Dimension – Flatland

Page 2-3

**Calibrate Storage:** Aimtoo Savatre **Matrix Trim:** Satin White **Glass:** Frosted **Matrix Tiles:** AIS Engage – Cape Cod Chatham **Bolton Seating:** Momentum Crossing – Alabaster

Page 4-5

**Matrix Laminate Tiles:** Looks Likatre **Calibrate Storage:** Looks Likatre **Glass:** Grey **Matrix Trim and Overheads:** Graphite Sky **Matrix Tiles:** AIS Avenue Park Place

Pages 6-7

**Calibrate Storage:** Looks Likatre and True White **Matrix Trim and Legs:** Innertone **Matrix Tiles:** AIS Cape Cod – Harwich **Storage Cushions:** LoomSource Enamour – Daydream **Bolton Seating:** Fully Upholstered in LUUM Navigate – Pumice **Volker Cubes:** Maharam Entwine – Quench

Availability of materials shown above may vary due to manufacturers' lifecycle management. Some materials shown are standard on AIS and some are COM. Please check with AIS to confirm availability and pricing.

Pages 8-9

**Matrix Panels:** Brazilwood **Worksurfaces:** Chalk **Matrix Trim and Legs:** Chalk **Upmount Screen:** Grey Glass **Guest Seating:** Brentano Speckle – Teapot **Natick Seating:** Graduated Striped Black Mesh with Mayer Lavish – Turquoise

Pages 10-11

**Calibrate Storage:** Looks Likatre and True White **Matrix Trim and Legs:** Innertone **Matrix Tiles:** AIS Cape Cod – Harwich **Storage Cushions:** LoomSource Enamour – Daydream **Bolton Seating:** Fully Upholstered in LUUM Navigate – Pumice **Volker Cubes:** Maharam Divina MD – 813

Pages 12-13

**Volker Cube:** Carnegie Relay – 62 **Matrix Tiles:** Mayer Fedora – Indigo and Guilford of Maine Whisper – Cloud **Matrix Frame:** Lite Silver **Table Legs:** Medium Tone **Worksurface:** Looks Likatre **Devens Seating:** Grey Mesh Back and LUUM Modulus – Superstructure Upholstered Seat

OFFICE FURNITURE

WAREHOUSE

NEW & USED OFFICE FURNITURE

www.OfficeFurnitureTupelo.com  
117 2nd Street Tupelo, MS 38801  
(662)566-2439

AIS

Please contact your AIS Representative to request samples for viewing before specifying. The colors, materials and finishes featured within our printed and electronic literature may vary due to the printing processes and/or viewing screens used.