

Caraway

Office I248



ah aspenhome®

see more at www.aspenhome.net



Open Bookcase
I248-333

Door Bookcase
I248-332

60" Adj. Height Lift Desk
I248-360T/IUAB-301-1

Lateral File
I248-378



Office Chair
I248-366

Single Ped Desk, Hutch & Return
I248-307/307H/308

The Caraway Collection

This farmhouse inspired collection brings warmth and richness to your work environment. The desks have generous proportions, molding on the drawers and a wide pilaster that rests upon a squared, tapered foot. The neutral, brown tops complement the aged ivory finish.

Finish and Hardware



**Aged Ivory Two-Toned Finish
with Brass Finish Hardware**

Built With You In Mind

- Dovetail drawer construction for long-lasting strength and durability.
- Stainless steel ball bearing drawer slides provide smooth movement and durability.
- Enjoy stylish and functional features to accommodate today's lifestyle needs.

Please note some color variations of our furniture finishes and fabrics are possible due to room lighting. Please use as a reference only.

Lateral File
I248-378

66" Executive Desk
I248-303

Credenza Desk & Hutch
I248-316/317

Features



AC & USB Outlets



Drop Front Drawers



Lifting Desk Top



Locking File Drawer

Open Bookcase
I248-333

Door Bookcase
I248-332



LEARN MORE

Scan the QR code and click on the link to see more images and information on this aspenhome® furniture collection.

Trouble scanning? Visit qrco.de/beltF1

ah

Caraway Collection



CREDENZA DESK & HUTCH

1248-316/317 - 68W x 76H x 24D

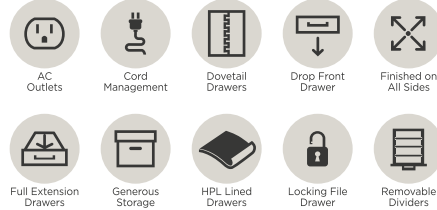
FEATURES: 3 doors, AC & USB outlets, high pressure laminate lined drop front keyboard drawer, 3 utility drawers, locking file drawer, removable dividers, adjustable shelves, cord management



66" EXECUTIVE DESK

1248-303 - 66W x 31H x 30D

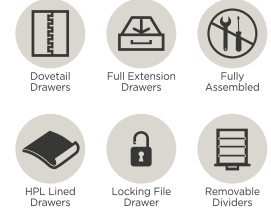
FEATURES: AC outlets, high pressure laminate lined drop front keyboard drawer, 4 utility drawers, 2 high pressure laminate lined locking file drawers, removable dividers, cord management



LATERAL FILE

1248-378 - 41W x 31H x 21D

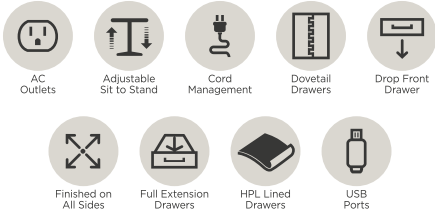
FEATURES: High pressure laminate lined locking file drawer, 2 utility drawers, removable dividers



60" ADJUSTABLE HEIGHT LIFT DESK

1248-360T/IUAB-301-1 - 60W x 32-49H x 28D

FEATURES: AC & USB outlets in soft close compartment, high pressure laminate lined drop front keyboard drawer, 2 utility drawers, lift mechanism, cord management



OPEN BOOKCASE

1248-333 - 32W x 76H x 15D

DOOR BOOKCASE

1248-332 - 32W x 76H x 15D

FEATURES: 3 adjustable shelves, 2 doors on door bookcase, cord management



OFFICE CHAIR

1248-366 - 26W x 40H x 28D

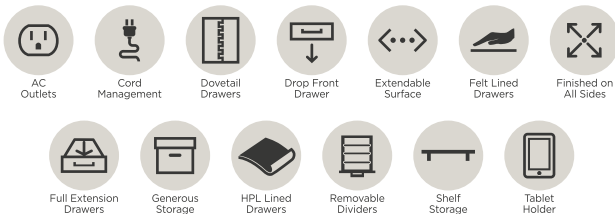
FEATURES: Quality upholstery, deluxe ball casters, gas lift, knee tilt, five star base



CRAFTING DESK

1248-303CH - 64W x 36H x 30D

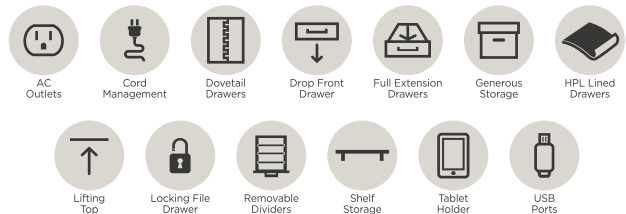
FEATURES: 2 doors, AC outlets, high pressure laminate lined drop front drawer, 2 utility drawers, pullout tablet holder tray, pullout surface, removable dividers, file storage behind doors, half shelves, cord management



SINGLE PED DESK WITH HUTCH & RETURN

1248-307/307H/308 - 70W x 47H x 73D

FEATURES: 6 drawers, AC & USB outlets, high pressure laminate lined drop front keyboard drawer, drop down tablet holders, open shelves, removable dividers, locking file drawer, lifting desktop, cord management



Learn **MORE** and **CONNECT** with us!

aspenshome.net

Any finishes and fabrics shown may vary in appearance and are meant as a representation. Props shown are for display purposes only and are not included.

Alexander

Office I3014



ah aspenhome®

see more at www.aspenhome.net



Door Bookcase
I3014-332

66" Executive Desk
I3014-303

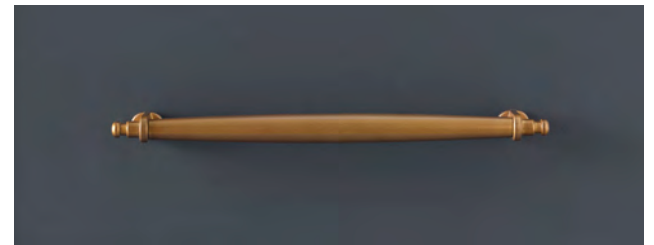


Workstation/Combo File
I3014-378

The Alexander Collection

This luxurious collection brings opulence to the room with a transitional design that will never be out of style. Alexander showcases a dreamy midnight finish and champagne bronze finish hardware. Functional features abound with AC outlets, hidden drawers, removable dividers, locking file drawers and so much more.

Finish and Hardware



**Midnight Finish with
Champagne Bronze Finish Hardware**

Built With You In Mind

- Dovetail drawer construction for long-lasting strength and durability.
- Stainless steel ball bearing drawer slides provide smooth movement and durability.
- Enjoy stylish and functional features to accommodate today's lifestyle needs.

Please note some color variations of our furniture finishes and fabrics are possible due to room lighting. Please use as a reference only.

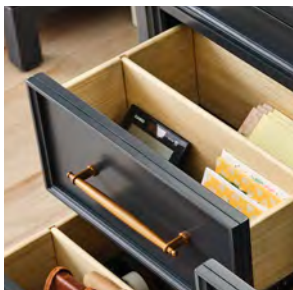
Door Bookcase
I3014-332



Features



Drop Front Drawers



Removable Dividers



Hidden Drawer



Locking File Drawers



LEARN MORE

Scan the QR code and click on the link to see more images and information on this aspenhome® furniture collection.

Trouble scanning? Visit qrco.de/bejocN

ah

Alexander Collection



66" EXECUTIVE DESK

I3014-303 - 66W x 31H x 30D

FEATURES: High pressure laminate lined drop front keyboard drawer with AC outlets, 2 pencil drawers with removable dividers, utility drawer with removable dividers, 2 locking file drawers, cord management



AC Outlets



Cord Management



Dovetail Drawers



Drop Front Drawer



Finished on All Sides



Full Extension Drawers



Fully Assembled



Generous Storage



HPL Lined Drawers



Locking File Drawer



Removable Dividers



WORKSTATION/COMBO FILE

I3014-378 - 38W x 31H x 22D

FEATURES: High pressure laminate lined drop front keyboard drawer, high pressure laminate lined locking file drawer, 2 utility drawers with removable dividers, hidden drawer above file drawer, cord management



Cord Management



Dovetail Drawers



Drop Front Drawer



Full Extension Drawers



Fully Assembled



Hidden Storage



HPL Lined Drawers



Locking File Drawer



Removable Dividers



DOOR BOOKCASE

I3014-332 - 34W x 78H x 14D

FEATURES: 2 doors, 3 adjustable shelves, cord management



Cord Management



Fully Assembled



Generous Storage



Shelf Storage



Learn **MORE** and **CONNECT** with us!

aspenhome.net

Any finishes and fabrics shown may vary in appearance and are meant as a representation. Props shown are for display purposes only and are not included.

v.051424

LEATHER OFFICE CHAIRS



aspenhome®

see more at www.aspenhome.net



A16-3680 Blake, Venetian Caramel

FUNCTIONAL FEATURES

Our premium top grain leather executive chairs are designed to provide optimum comfort, function, longevity, and the sophisticated elegance that only real leather and durable craftsmanship can provide. Each chair provides best-in-class, ergonomic function and support using quality materials and features from the deluxe swivel base and casters to the gas lift and knee tilt mechanism.



WOOD 5-STAR BASE



METAL 5-STAR BASE



GAS LIFT & KNEE TILT



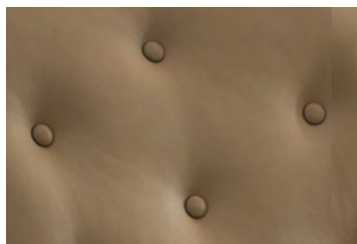
DELUXE SWIVEL CASTERS

DESIGN & AESTHETIC

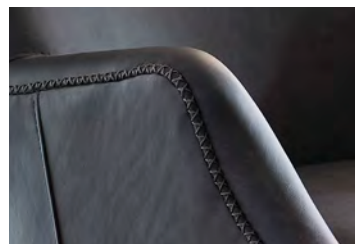
Leather office chairs instantly elevate the overall appearance of a workspace, offering luxurious appeal and curated style. Our chairs are made of durable, top grain leather using expertly crafted upholstery techniques from button tufting to hand stitching that maximizes the aesthetic. A variety of colors and styles are available which means finding the perfect chair is easier with aspenhome®.



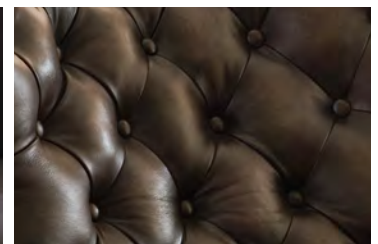
HAND APPLIED NAIL HEAD TRIM



BUTTON BACK



DETAILED STITCHING



BUTTON TUFTED BACK



A18-3681 Adler, Venetian Blue



A13-3680 Drew, Luxe Tan



SKYLAR

29W x 40H x 31D

A11-3680 Ardent Chestnut
A11-3681 Luxe White



DREW

27W x 40H x 29D

A13-3680 Luxe Tan
A13-3681 Luxe Grey



ADMIRAL

27W x 42H x 35D

A12-3680 Luxe Midnight
A12-3681 Mystic Bourbon



JEFFERSON

29W x 41H x 33D

A15-3680 Burnished Umber
A15-3681 Burnished Walnut



REESE

28W x 40H x 33D

A14-3680 Ardent Iron
A14-3681 Ardent Dove



BLAKE

26W x 34H x 30D

A16-3680 Venetian Caramel
A16-3681 Venetian Blue
A16-3682 Venetian Silver



CAMERON

26W x 34H x 30D

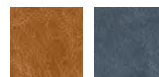
A17-3680 Ardent Onyx
A17-3681 Burnished Umber
A17-3682 Luxe Ecru



ADLER

27W x 40H x 33D

A18-3680 Venetian Caramel
A18-3681 Venetian Blue



LEARN MORE AT ASPENHOME.NET



Scan the QR code and click on the link to see more images and information on this aspenhome® furniture collection.

Trouble scanning? Visit qrco.de/bfK1gq

Please note some color variations of our furniture finishes and fabrics are possible due to room lighting. Use as a reference only.

LUXURY IN LEATHER

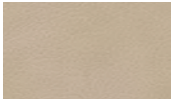
Beautiful to behold and soft to the touch, aspenhome® leathers are elegant and inviting, intending to imbibe your workspace with blissful comfort. The leather itself is vital to the style of the chair, and while all aspenhome® leathers are top grain leather, we provide options because not every leather is for everybody.

Ardent Leather Top Grain Leather

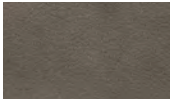
Understated grain, monochromatic colors with a protective low sheen topcoat.



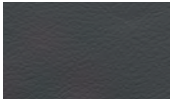
ARDENT CHESTNUT



ARDENT DOVE



ARDENT IRON



ARDENT ONYX

Burnished Leather Hand Wipe Off Semi-Aniline Top Grain Leather

Tone-on-tone facade when contrasting top and underlying colors with a stain-resistant, self-sealing finish.



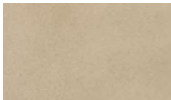
BURNISHED UMBER



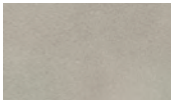
BURNISHED WALNUT

Luxe Leather Top Grain Leather

Milled grain appearance, classic colors with a light low-sheen topcoat for stain resistance.



LUXE ECRU



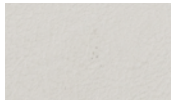
LUXE GREY



LUXE MIDNIGHT



LUXE TAN



LUXE WHITE

Mystic Leather Hand Wipe Off Semi-Aniline Top Grain Leather

Pronounced grain pattern in a rich, dark color with a top coat to resist stains.



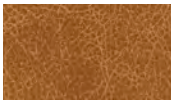
MYSTIC BOURBON

Venetian Leather Dual-Tone Cracked Semi-Aniline Top Grain Leather

Distinctive web patterning with a protective low sheen finish.



VENETIAN BLUE



VENETIAN CARAMEL



VENETIAN SILVER

A11-3680	Skylar Exec Chair	Ardent Chestnut
A11-3681	Skylar Exec Chair	Luxe White
A12-3680	Admiral Exec Chair	Mystic Bourbon
A12-3681	Admiral Exec Chair	Luxe Midnight
A13-3680	Drew Exec Chair	Luxe Tan
A13-3681	Drew Exec Chair	Luxe Grey
A14-3680	Reese Exec Chair	Ardent Iron
A14-3681	Reese Exec Chair	Ardent Dove
A15-3680	Jefferson Exec Chair	Burnished Umber

A15-3681	Jefferson Exec Chair	Burnished Walnut
A16-3680	Blake Exec Chair	Venetian Caramel
A16-3681	Blake Exec Chair	Venetian Blue
A16-3682	Blake Exec Chair	Venetian Silver
A17-3680	Cameron Exec Chair	Ardent Onyx
A17-3681	Cameron Exec Chair	Burnished Umber
A17-3682	Cameron Exec Chair	Luxe Ecru
A18-3680	Adler Exec Chair	Venetian Caramel
A18-3681	Adler Exec Chair	Venetian Blue



Learn **MORE** and **CONNECT** with us!

aspenhome.net

Any finishes and fabrics shown may vary in appearance and are meant as a representation. Props shown are for display purposes only and are not included.

Sinclair

Office I224





68" Credenza Desk & Hutch
I224-316/317

68" Executive Desk
I224-303

Combo File
I224-378



Combo File
I224-378

The Sinclair Collection

The Sinclair office collection offers relaxed traditional style and world-class craftsmanship. Enjoy cleverly designed functional features such as built-in Qi wireless charging, USB ports, AC outlets, locking file drawers and smartly styled drawers hidden in the molding.

Finish and Hardware



Ash Grey Finish with
Antique Brass Finish Hardware

Built With You In Mind

- Dovetail drawer construction for long-lasting strength and durability.
- Stainless steel ball bearing drawer slides provide smooth movement and durability.
- Enjoy stylish and functional features to accommodate today's lifestyle needs.

Please note some color variations of our furniture finishes and fabrics are possible due to room lighting. Please use as a reference only.

Combo File
1224-378

L-Shaped Desk
1224-307/308

Open Bookcase
1224-333

Door Bookcase
1224-332



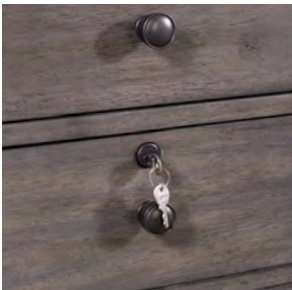
Features



AC Outlets



Drop Front Drawers



Locking File Drawers



Wireless Charging



LEARN MORE

Scan the QR code and click on the link to see more images and information on this aspenhome® furniture collection.

Trouble scanning? Visit qrco.de/bf3oLB

ah

Sinclair Collection



CREDENZA DESK & HUTCH

I224-316/317 - 69W x 85H x 24D

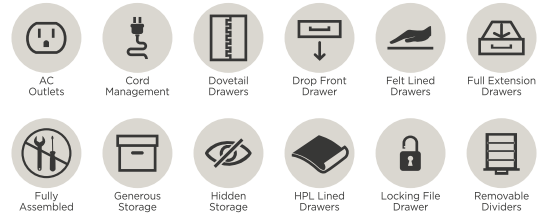
FEATURES: AC & USB outlets, high pressure laminate lined drawers, drop front keyboard drawer, Qi wireless charging, locking file drawer, felt lined drawers, removable dividers, adjustable shelves, cord management



EXECUTIVE DESK

I224-303 - 68W x 31H x 32D

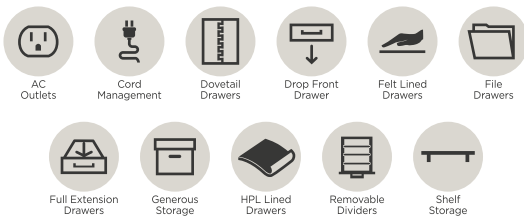
FEATURES: AC outlets, high pressure laminate lined drop front keyboard drawer, felt lined drawers, removable dividers, rotating knob reveals hidden storage, locking file drawer, cord management



L-SHAPED DESK

I224-307/308 - 69W x 31H x 82D

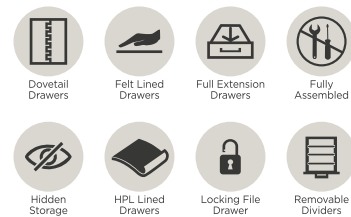
FEATURES: 6 drawers, 1 door, high pressure laminate lined drop front keyboard drawers, AC outlets, file drawer, felt lined drawers, high pressure laminate lined drawers, adjustable shelf, cord management



COMBO FILE

I224-378 - 42W x 31H x 24D

FEATURES: High pressure laminate lined drawers, locking file drawer, removable dividers, felt lined drawer in top molding



DOOR BOOKCASE

I224-332 - 32W x 78H x 15D

FEATURES: 2 doors, 3 adjustable shelves, fixed shelf, cord management



OPEN BOOKCASE

I224-333 - 32W x 78H x 15D

FEATURES: 3 adjustable shelves, fixed shelf, cord management



Learn **MORE** and **CONNECT** with us!

aspenshome.net

Any finishes and fabrics shown may vary in appearance and are meant as a representation. Props shown are for display purposes only and are not included.

Hawthorne

Office I26



ah aspenhome®

see more at www.aspenhome.net



66" Curved Executive Desk
126-303



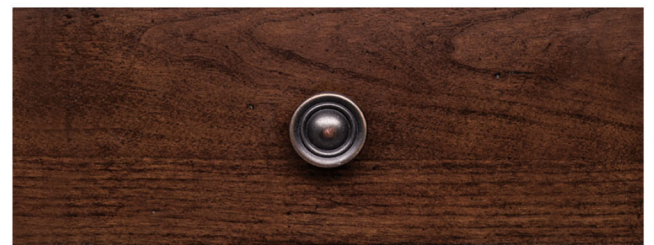
Door Bookcase
126-332

Open Bookcase
126-333

The Hawthorne Collection

Featuring a rich finish made of cherry and other select veneers and complemented with hardware in an oil rubbed finish. Enjoy ergonomically designed and functional features such as built-in power outlets, locking file drawers and drop front keyboard drawers for quality and style that is built to last.

Finish and Hardware



Brown Cherry Finish
with Oil Rubbed Finish Hardware

Built With You In Mind

- Dovetail drawer construction for long-lasting strength and durability.
- Stainless steel ball bearing drawer slides provide smooth movement and durability.
- Enjoy stylish and functional features to accommodate today's lifestyle needs.

Please note some color variations of our furniture finishes and fabrics are possible due to room lighting. Please use as a reference only.

Combo File
126-378

Reversible L-Shaped Desk
126-307/308



Features



Drop Front Drawers



Adjustable Shelves



Locking File Drawers



Removable Dividers

Combo File
126-378



LEARN MORE

Scan the QR code and click on the link to see more images and information on this aspenhome® furniture collection.

Trouble scanning? Visit qrco.de/beltNW

ah

Hawthorne Collection

Reversible L-Shaped Desk



66" CURVED DESK & RETURN

I26-307/308 - 66W x 31H x 87D

FEATURES: 5 drawers total, 2 utility drawers, removable dividers, felt lined top drawers, drop front keyboard drawer, locking file drawer, adjustable shelf, AC outlets, partner's curve, metal grommets for cord management, reversible for left or right hand users



AC Outlets



Cord Management



Dovetail Drawers



Drop Front Drawer



Felt Lined Drawers



Finished on All Sides



Full Extension Drawers



Generous Storage



Locking File Drawer



Removable Dividers



Reversible Desk



Shelf Storage



66" CURVED EXECUTIVE DESK

I26-303 - 66W x 31H x 35D

FEATURES: 7 drawers total, 4 utility drawers, 2 locking file drawers, felt lined top drawers, removable dividers, cord management



Cord Management



Dovetail Drawers



Felt Lined Drawers



Finished on All Sides



Full Extension Drawers



Fully Assembled



Generous Storage



Locking File Drawer



Removable Dividers



COMBO FILE

I26-378 - 42W x 31H x 24D

FEATURES: 2 utility drawers with removable dividers, felt lined top drawer, 2 file drawers



Dovetail Drawers



Felt Lined Drawers



File Drawers



Full Extension Drawers



Fully Assembled



Removable Dividers



DOOR BOOKCASE

I26-332 - 32W x 78H x 14D

FEATURES: 2 doors, 3 adjustable shelves, 1 fixed shelf, cord management



Cord Management



Fully Assembled



Generous Storage



Shelf Storage



OPEN BOOKCASE

I26-333 - 32W x 78H x 14D

FEATURES: 3 adjustable shelves, 1 fixed shelf, cord management



Cord Management



Fully Assembled



Generous Storage



Shelf Storage



Learn **MORE** and **CONNECT** with us!

aspenhome.net

Any finishes and fabrics shown may vary in appearance and are meant as a representation. Props shown are for display purposes only and are not included.

Jackson

Office I3184





72" Desk with Return
I3184-305/306

Display Cabinet
I3184-337

Door Bookcase
I3184-332



72" Executive Desk
I3184-300B/300T

Display Cabinet
I3184-337

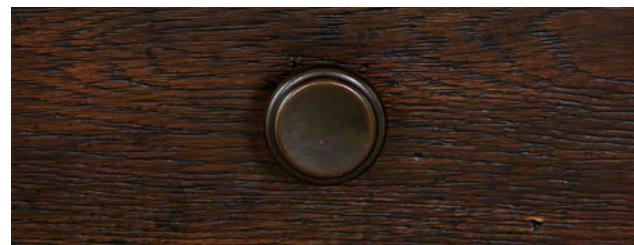
Door Bookcase
I3184-332

Please note some color variations of our furniture finishes and fabrics are possible due to room lighting. Please use as a reference only.

The Jackson Collection

Jackson pairs metal knobs and bar pull hardware with a Turkish coffee finish to create a combination so rich you can almost taste it. The traditional style collection in white oak and other select veneers is teeming with functional features such as AC & USB outlets, concealed compartments, drop front drawers, locking file drawers and so much more.

Finish and Hardware



Turkish Coffee Finish with
Metal Knobs & Bar Pull Hardware

Built With You In Mind

- Dovetail drawer construction for long-lasting strength and durability.
- Stainless steel ball bearing drawer slides provide smooth movement and durability.
- Enjoy stylish and functional features to accommodate today's lifestyle needs.



62" Executive Desk
I3184-304

Workstation/Combo File
I3184-378

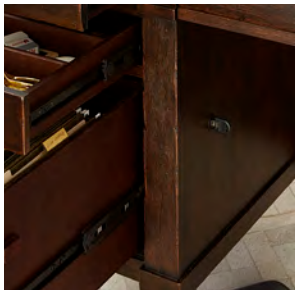
Features



AC & USB Outlets



Drop Front Drawers



Locking File Drawers



Hidden Doors



Workstation/Combo File
I3184-378



LEARN MORE

Scan the QR code and click on the link to see more images and information on this aspenhome® furniture collection.

Trouble scanning? Visit qrco.de/bf3rOT

ah

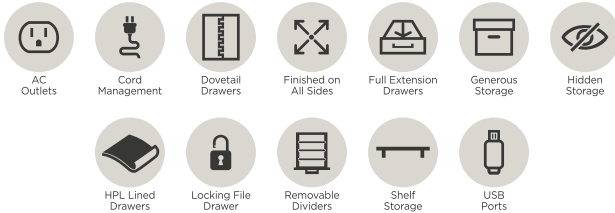
Jackson Collection



72" EXECUTIVE DESK

I3184-300B/300T - 72W x 32H x 36D

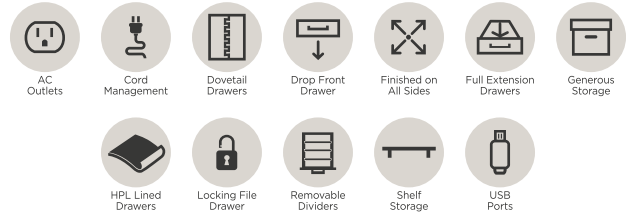
FEATURES: 2 pencil drawers, 2 utility drawers, 2 concealed drawers, 2 hidden doors with adjustable shelf, 2 locking file drawers, high pressure laminate lining, removable dividers, AC & USB outlets in concealed desktop compartment, cord management



72" DESK WITH RETURN

I3184-305/306 - 72W x 31H x 95D

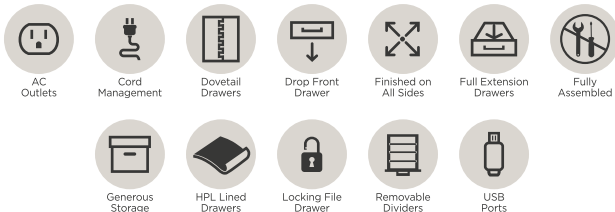
FEATURES: 2 high pressure laminate lined removable drop front keyboard drawers, 1 door with adjustable shelf, utility drawer with removable divider and pencil tray, 2 pencil drawers with removable dividers, locking file drawer, AC & USB outlets, cord management



62" EXECUTIVE DESK

I3184-304 - 62W x 31H x 28D

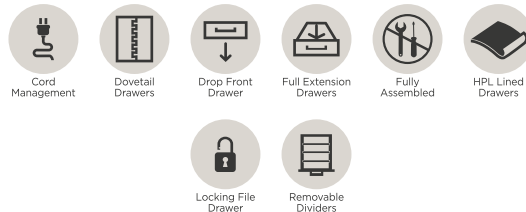
FEATURES: High pressure laminate lined drop front keyboard drawer, removable keyboard tray, 4 utility drawers with removable dividers, AC & USB outlets in concealed desktop compartment, 2 locking file drawers, cord management



WORKSTATION/COMBO FILE

I3184-378 - 45W x 31H x 25D

FEATURES: High pressure laminate lined drop front keyboard drawer, high pressure laminate lined locking file drawer, utility drawer with removable dividers, cord management



DISPLAY CABINET

I3184-337 - 44W x 84H x 19D

FEATURES: Glass doors, 3 wood trimmed glass shelves, LED touch lighting



DOOR BOOKCASE

I3184-332 - 34W x 77H x 15D

FEATURES: 2 doors, 3 adjustable shelves, cord management



Learn **MORE** and **CONNECT** with us!

aspenshome.net

Any finishes and fabrics shown may vary in appearance and are meant as a representation. Props shown are for display purposes only and are not included.

Maddox

Office I644





Door Bookcase
1644-332

Credenza
1644-316

Door Bookcase
1644-332



Credenza Desk & Hutch
1644-316/317

The Maddox Collection

The hallmark of this design is the natural biscotti finish and the use of texture, wood grain and inlay patterns to subtly tease the eye. The brushed stainless metal legs and uniquely designed hardware provides a subtle contrast. The transitional style will fit flexibly into multiple interior styles and spaces.

Finish and Hardware



Biscotti Finish with Brushed
Stainless Finish Hardware

Built With You In Mind

- Dovetail drawer construction for long-lasting strength and durability.
- Stainless steel ball bearing drawer slides provide smooth movement and durability.
- Enjoy stylish and functional features to accommodate today's lifestyle needs.

Please note some color variations of our furniture finishes and fabrics are possible due to room lighting. Please use as a reference only.



Modular Desk
I644-317/366WD/378

Features



AC & USB Outlets



Drop Front Drawers



Locking File Drawers



Touch Lighting



68" Writing Desk
I644-366WD

Door Bookcase
I644-332



LEARN MORE

Scan the QR code and click on the link to see more images and information on this aspenhome® furniture collection.

Trouble scanning? Visit qrco.de/bedDhb

ah

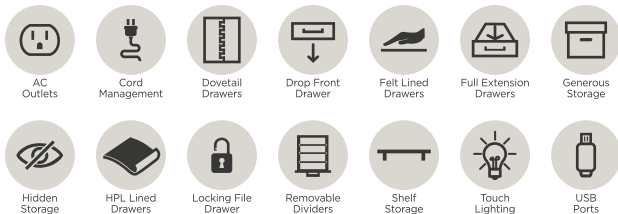
Maddox Collection



CREDENZA DESK & HUTCH

I644-316/317 - 66W x 76H x 24D

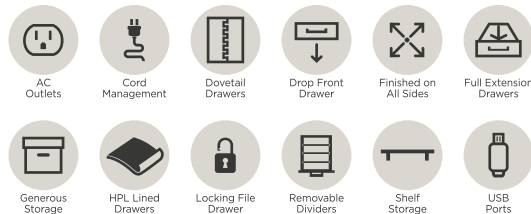
FEATURES: Drop front keyboard drawer with high pressure laminate lining, 3 utility drawers with removable dividers, locking file drawer, 4 doors total, 2 felt lined hidden drawers, AC & USB outlets, LED undershelf lighting, adjustable shelves, lower section fits larger monitors, cord management



66" EXECUTIVE DESK

I644-303 - 66W x 31H x 30D

FEATURES: Drop front keyboard drawer with high pressure laminate lining, 4 utility drawers with removable dividers, 2 locking file drawers, 2 doors on desk front, AC & USB outlets, storage tray in desktop compartment, adjustable shelves, cord management



68" WRITING DESK

I644-366WD - 68W x 31H x 24D

FEATURES: Drop front keyboard drawer with high pressure laminate lining, 2 utility drawers with removable dividers



DOOR BOOKCASE

I644-332 - 32W x 76H x 14D

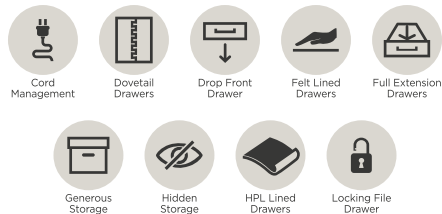
FEATURES: 2 doors, adjustable shelves, cord management



CREDENZA DESK

I644-316 - 66W x 31H x 24D

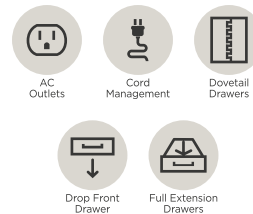
FEATURES: Drop front keyboard drawer with high pressure laminate lining, 3 utility drawers with removable dividers, locking file drawer, 2 doors, 2 felt lined hidden drawers, adjustable shelves, cord management



WORKSTATION/COMBO FILE

I644-378 - 42W x 31H x 22D

FEATURES: Drop front keyboard drawer with high pressure laminate lining, AC outlets, 1 door, adjustable shelf, utility drawer with removable storage tray, removable dividers, locking file drawer



Learn **MORE** and **CONNECT** with us!

aspenshome.net

Any finishes and fabrics shown may vary in appearance and are meant as a representation. Props shown are for display purposes only and are not included.

Harper Point

Office IHP



ah aspenhome®

see more at www.aspenhome.net



The Harper Point Collection

Enjoy a relaxed contemporary mixed media style in an organic hickory veneer combined with modern custom top mounted hardware in a gunmetal finish. Desks, bookcases and other pieces include metal bases matching the hardware for a look that is both modern and industrial.

Finish and Hardware



Fossil Finish with
Gunmetal Finish Hardware

Built With You In Mind

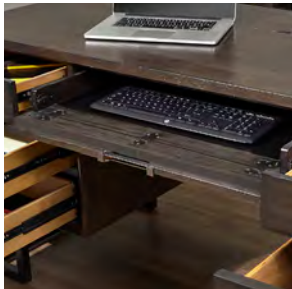
- Dovetail drawer construction for long-lasting strength and durability.
- Stainless steel ball bearing drawer slides provide smooth movement and durability.
- Enjoy stylish and functional features to accommodate today's lifestyle needs.



Features



AC Outlets



Drop Front Drawer



Rolling Casters



Adjustable Shelves



LEARN MORE

Scan the QR code and click on the link to see more images and information on this aspenhome® furniture collection.

Trouble scanning? Visit qrco.de/bemiON

ah

Harper Point Collection



CREDENZA DESK & HUTCH

IHP-316/317-KHA - 66W x 76H x 24D

FEATURES: High pressure laminate lined drop front keyboard drawer, 3 doors, 3 utility drawers, locking file drawer, AC & USB outlets, adjustable shelves, removable dividers, cord management



EXECUTIVE DESK

IHP-304-KHA - 66W x 31H x 28D

FEATURES: 6 drawers with high pressure laminate lining including 1 drop front keyboard drawer and 1 locking file drawer, AC outlets in hidden compartment, cord management



ADJUSTABLE HEIGHT LIFT DESK

IHP-360t-KHA/iuab-301-1 - 60W x 33-50H x 28D

FEATURES: 3 high pressure laminate lined drawers, drop front keyboard drawer, AC & USB outlets in soft close compartment, lift mechanism, cord management



DOOR BOOKCASE

IHP-332-KHA - 32W x 76H x 14D

FEATURES: 2 doors, 3 adjustable shelves, cord management

OPEN BOOKCASE

IHP-333-KHA - 32W x 76H x 14D

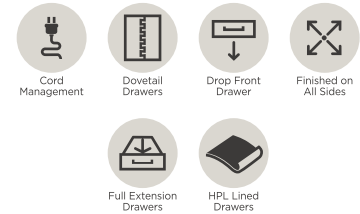
FEATURES: 3 adjustable shelves, cord management



WRITING DESK

IHP-360wd-KHA - 60W x 31H x 26D

FEATURES: 3 high pressure laminate lined drawers, drop front keyboard drawer, rolling files fit perfectly under desk, cord management



COMBO FILE

IHP-378-KHA - 38W x 31H x 22D

FEATURES: 2 high pressure laminate lined utility drawers, shelf storage, high pressure laminate lined locking file drawer



OFFICE CHAIR

IHP-366-KHA - 19W x 37H x 23D

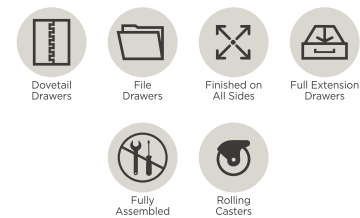
FEATURES: High-grade polyurethane fabric, deluxe ball casters, gas lift, knee tilt, five star base



ROLLING FILE

IHP-346-KHA - 22W x 23H x 22D

FEATURES: 2 high pressure laminate lined drawers, rolling casters, file drawer



Caraway

Office I248



aspenhome®

see more at www.aspenhome.net



The Caraway Collection

This farmhouse inspired collection brings warmth and richness to your work environment. The desks have generous proportions, molding on the drawers and a wide pilaster that rests upon a squared, tapered foot. The neutral, brown tops complement the aged slate finish.

Finish and Hardware



**Aged Slate Two-Tone Finish
with Brass Finish Bar Pull Hardware**

Please note some color variations of our furniture finishes and fabrics are possible due to room lighting. Please use as a reference only.

thoughtfully designed

Lateral File
I248-378-SLT

66" Executive Desk
I248-303-SLT

Credenza Desk & Hutch
I248-316/317-SLT

Chair
I248-366-SLT

Features



AC & USB Outlets



Drop Front Drawers



Lifting Desk Top



Locking File Drawers

Quality

- Dovetail drawer construction for long lasting durability.
- Stainless steel ball bearing drawer slides to withstand long term use.

Chair
I248-366-SLT

Single Ped Desk with Hutch
I248-307/307H-SLT

See more at www.aspenhome.net.

Caraway Collection



CREDENZA DESK & HUTCH

I248-316/317-SLT - 68W x 76H x 24D

FEATURES: 2 doors, AC & USB outlets, drop front keyboard drawer, removable dividers, adjustable shelves, locking file drawer, cord management



DOOR BOOKCASE

I248-332-SLT - 32W x 76H x 15D

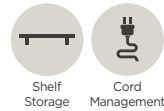
FEATURES: 2 doors, adjustable removable shelves, cord management



OPEN BOOKCASE

I248-333-SLT - 32W x 76H x 15D

FEATURES: adjustable removable shelves, cord management



60" ADJUSTABLE HEIGHT LIFT DESK

I248-360T-SLT/IUAB-301-1 - 60W x 32-49H x 28D

FEATURES: AC & USB outlets, drop front keyboard drawer, adjustable height, 3 memory positions, built-in sit/stand reminder, cord management



SINGLE PED DESK WITH HUTCH AND 48" RETURN DESK

I248-307/307H/308-SLT - 70W x 47H x 73D

FEATURES: AC & USB outlets, drop front keyboard drawer, drop down tablet holders, locking file drawer, lifting (sit/stand) desktop, 2 organization drawers, 2 pencil drawers, 2 open shelves, removable dividers, cord management



66" EXECUTIVE DESK

I248-303-SLT - 66W x 31H x 30D

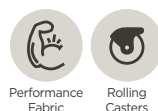
FEATURES: AC outlets, drop front keyboard drawer, locking file drawers, removable dividers, cord management



OFFICE CHAIR

I248-366-SLT - 26W x 40H x 28D

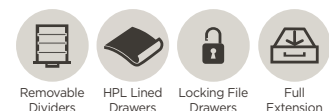
FEATURES: performance fabric, padded sides, adjustable height, gas lift, knee tilt, five-star base



LATERAL FILE

I248-378-SLT - 41W x 31H x 21D

FEATURES: removable dividers, HPL lined locking lateral file drawer



Learn **MORE** and **CONNECT** with us!

aspenhome.net

Any finishes and fabrics shown may vary in appearance and are meant as a representation. Props shown are for display purposes only and are not included.

v.060122

Weston

Office I35



ah

aspenhome.[®]
see more at www.aspenhome.net



Brown ale finish on cherry veneer accented with rubbed bronze hardware, highlight this beautiful office collection. “Ah” factors to improve your everyday tasks including A/C outlets and locking file drawers.



Brown Ale Finish, Cherry Veneer & Rubbed Bronze Hardware



see more at www.aspenhome.net

*Accessories and electronic components are for display purposes only.



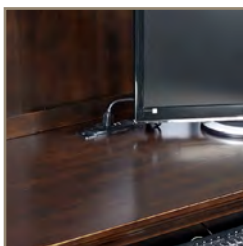
ah... features



Accommodates
Extra Large Monitors



Locking File Drawer
fits letter or legal sizes



Built-in A/C Outlets for
Charging Cellphones, etc



Stepped Back
Bun Foot

ah... quality

- Dovetail drawer construction for long lasting durability.
- Stainless steel ball bearing drawer guides to withstand long term use.



66" Credenza Desk & Hutch 135-316/317



I35-317 66" Credenza Hutch

67W x 45H x 14D

Monitor Area: 61W x 22H x 11D

Lower Opening Area: 13.25W x 5H x 11D (x2)

FEATURES:

- 2 adjustable shelves, 2 doors
- Designed to accommodate extra large monitors

I35-316 66" Credenza Desk

66W x 31H x 24D

Kneehole Area: 27W x 23H x 23D

FEATURES:

- 3 utility drawers, 1 adjustable shelf
- 2 A/C outlets, 1 with USB charging stations
- Locking file drawer for letter or legal sizes
- Drop front keyboard drawer
- Grommets on sides



I35-303 66" Executive Desk

66W x 31H x 30D

Kneehole Area: 27W x 23H x 26D

FEATURES:

- 5 utility drawers
- Drop front keyboard drawer
- 2 A/C outlets in desktop compartment
- 2 locking file drawers for letter or legal sizes
- Black laminate bottom in center drawer
- Grommets on sides



I35-307-1 66" Desk for Return

66W x 31H x 30D

Kneehole Area: 27W x 23H x 23D

FEATURES:

- 2 A/C outlets in desktop compartment
- Drop front keyboard drawer & 2 utility drawers
- Locking file drawer for letter or legal sizes
- Grommets on sides

I35-308 48" Return Desk

49W x 31H x 19D

Kneehole Area: 27W x 23H x 17D

FEATURES:

- Drop front drawer, 1 utility drawer



I35-371 60" Half Pedestal Desk

60W x 31H x 28D

Kneehole Area: 23W x 23H x 26D

FEATURES:

- Drop front center keyboard drawer
- 2 utility drawers
- Locking file drawer on right-side
- Grommets on sides
- Finished on all sides



I35-333 Open Bookcase

32W x 76H x 14D

FEATURES:

- 3 adjustable shelves, 1 fixed shelf

I35-332 Door Bookcase

32W x 76H x 14D

FEATURES:

- 2 doors
- 3 adjustable shelves (1 behind doors), 1 fixed shelf



I35-378 Combo File

39W x 31H x 22D

FEATURES:

- 2 utility drawers, 1 lateral file drawer
- Locking file drawer for letter or legal sizes
- File drawer lockout



I35-366 Office Chair

20W x 39-41H x 23D

Seat Height: 19-20.5"

FEATURES:

- Bonded leather seat and padded sides
- Gas lift, knee tilt, five-star base

Zane

Office I256



ah aspenhome®

see more at www.aspenhome.net

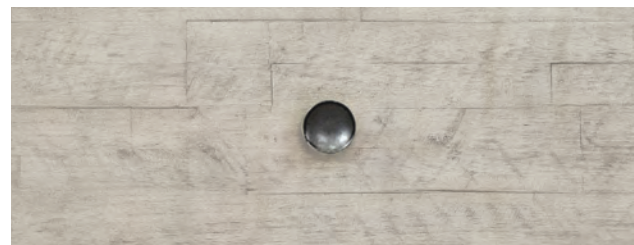


Please note some color variations of our furniture finishes and fabrics are possible due to room lighting. Please use as a reference only.

The Zane Collection

The contrast between the lightly textured parchment finish and matte black metal hardware provides a clean, contemporary look and timeless style. Cleverly scaled and full of functional features such as power outlets, USB ports and drop front drawers. Modular pieces can be configured to meet the unique needs of space and utility.

Finish and Hardware



Parchment Finish with
Matte Black Finish Hardware

Built With You In Mind

- Dovetail drawer construction for long-lasting strength and durability.
- Stainless steel ball bearing drawer slides provide smooth movement and durability.
- Enjoy stylish and functional features to accommodate today's lifestyle needs.



66" Executive Desk
I256-303

Workstation/Combo File
I256-378



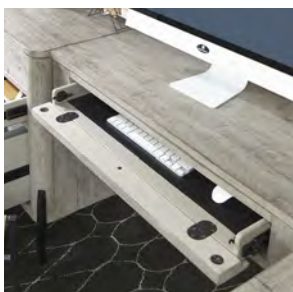
Door Bookcase
I256-332

Door Bookcase
I256-332

Features



USB & AC Outlets



Drop Front Drawers



Adjustable Shelves



Locking File Drawers

Modular Desk & Hutch
I256-3025/3030/3064/3078



LEARN MORE

Scan the QR code and click on the link to see more images and information on this aspenhome® furniture collection.

Trouble scanning? Visit qrco.de/beR5mG

ah

Zane Collection



MODULAR DESK

1256-3025/3030/3064/3078 - 85W x 75H x 67D

FEATURES: Dual AC and USB outlets, 2 doors, adjustable shelves, drop front keyboard drawer, HPL lined drawers, locking file drawer, reversible desk, cord management



DOOR BOOKCASE

1256-332 - 33W x 75H x 15D

FEATURES: 2 doors, adjustable shelves, cord management



66" EXECUTIVE DESK

1256-303 - 67W x 31H x 29D

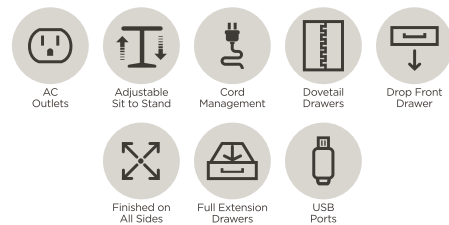
FEATURES: Drop front keyboard drawer, HPL lined drawers, utility drawers, 2 locking file drawers



ADJUSTABLE HEIGHT LIFT DESK

1256-360T/IUAB-301-1 - 60W x 31-48H x 28D

FEATURES: Drop front keyboard drawer, utility drawers, dual AC & USB outlets in soft close compartment, cord management



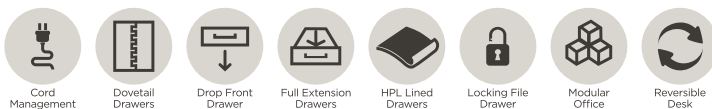
REVERSIBLE
Configure the return on either the left or right.



L-SHAPED DESK

1256-3025/3030/3064 - 85W x 31H x 67D

FEATURES: Drop front keyboard drawer, HPL lined drawers, utility drawers, locking file drawer, reversible desk, cord management



WORKSTATION/COMBO FILE

1256-378 - 39W x 31H x 22D

FEATURES: AC outlets, drop front keyboard drawer, HPL lined drawers, removable dividers, locking file drawer



Learn **MORE** and **CONNECT** with us!

aspenshome.net

Any finishes and fabrics shown may vary in appearance and are meant as a representation. Props shown are for display purposes only and are not included.

Sloane

Office I3327



ah aspenhome®

see more at www.aspenhome.net



Door Bookcase
I3327-332

60" Adj. Height Lift Desk
I3327-360T/IUAB-301-1

Workstation/Combo File
I3327-378



66" Executive Desk
I3327-303

The Sloane Collection

Sloane makes a statement with a dark mink finish and prominent grain on mindi and other select veneers. An embodiment of sophistication, Sloane's contemporary style makes use of rounded corners and smooth design details to impress the eyes while softening the space.

Finish and Hardware



Mink Finish with
Metal Bar Pull Hardware

Built With You In Mind

- Dovetail drawer construction for long-lasting strength and durability.
- Stainless steel ball bearing drawer slides provide smooth movement and durability.
- Enjoy stylish and functional features to accommodate today's lifestyle needs.

Please note same color variations in our furniture finishes and fabrics are possible due to room lighting. Please use as a reference only.

Door Bookcase
I3327-332

Writing Desk
I3327-360WD

Workstation/Combo File
I3327-378

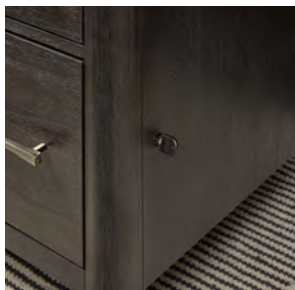
Features



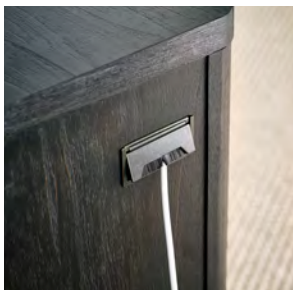
AC & USB Outlets



Drop Front Drawers



Locking File Drawer



Cord Management



LEARN MORE

Scan the QR code and click on the link to see more images and information on this aspenhome® furniture collection.

Trouble scanning? Visit qrco.de/bf3rPN



Door Bookcase
I3327-332

ah

Sloane Collection



66" EXECUTIVE DESK

13327-303 - 66W x 31H x 28D

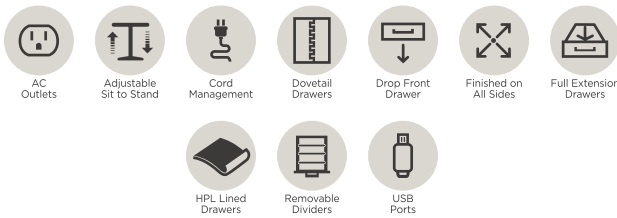
FEATURES: High pressure laminate lined drop front keyboard drawer, 2 pencil drawers, 2 utility drawers, 2 locking file drawers, removable dividers, cord management



60" ADJUSTABLE HEIGHT LIFT DESK

13327-360T/IUAB-301-1 - 60W x 32-49H x 28D

FEATURES: High pressure laminate lined drop front drawer, 2 utility drawers with removable dividers, AC & USB outlets in soft close desktop compartment, lift mechanism, cord management



DOOR BOOKCASE

13327-332 - 34W x 78H x 14D

FEATURES: 2 doors, 3 adjustable shelves, cord management



WORKSTATION/COMBO FILE

13327-378 - 36W x 31H x 22D

FEATURES: Drop front keyboard drawer, utility drawer with removable dividers, locking file drawer, high pressure laminate lining, cord management



WRITING DESK

13327-360WD - 60W x 31H x 28D

FEATURES: High pressure laminate lined drop front keyboard drawer, 2 utility drawers



Learn **MORE** and **CONNECT** with us!

aspenhome.net

Any finishes and fabrics shown may vary in appearance and are meant as a representation. Props shown are for display purposes only and are not included.

Hensley

Office I3002





60" Adjustable Height Lift Desk
I3002-360T/IUAB-301-1



Workstation Combo File
I3002-378

The Hensley Collection

Hensley offers a classic, transitional style in a warm honey finish with beautiful aged brass finish hardware. Enjoy functional features throughout such as built-in AC & USB outlets, drop front drawers, adjustable height controls, removable dividers, locking file drawers, generous storage, cord management and so much more.

Finish and Hardware



Honey Finish with
Aged Brass Finish Hardware

Built With You In Mind

- Dovetail drawer construction for long-lasting strength and durability.
- Stainless steel ball bearing drawer slides provide smooth movement and durability.
- Enjoy stylish and functional features to accommodate today's lifestyle needs.

Please note some color variations of our furniture finishes and fabrics are possible due to room lighting. Please use as a reference only.

Workstation Combo File
I3002-378

66" Executive Desk
I3002-303



Door Bookcase
I3002-332

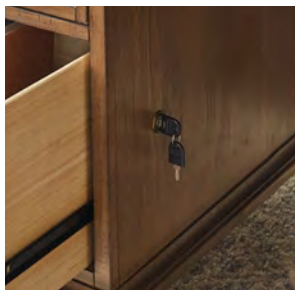
Features



AC & USB Outlets



Drop Front Drawers



Locking File Drawers



Lift Mechanism

Door Bookcase
I3002-332

Workstation Combo File
I3002-378



LEARN MORE

Scan the QR code and click on the link to see more images and information on this aspenhome® furniture collection.

Trouble scanning? Visit qrco.de/beRnVZ

ah

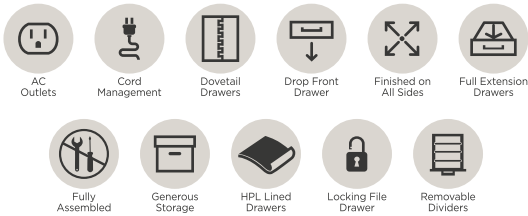
Hensley Collection



66" EXECUTIVE DESK

I3002-303 - 66W x 31H x 30D

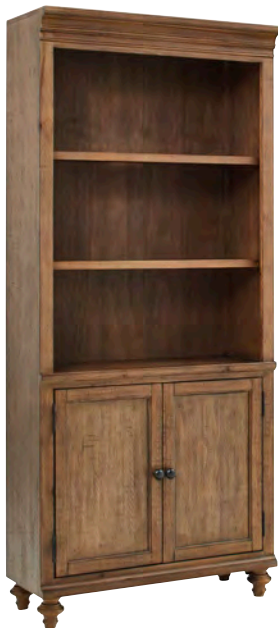
FEATURES: High pressure laminate lined drop front keyboard drawer, 4 utility drawers with removable dividers, 2 locking file drawers, AC outlets, cord management



60" ADJUSTABLE HEIGHT LIFT DESK

I3002-360T/IUAB-301-1 - 60W x 33-50H x 28D

FEATURES: High pressure laminate lined drop front keyboard drawer, 2 utility drawers, AC & USB outlets in soft close compartment, lift mechanism, cord management



DOOR BOOKCASE

I3002-332 - 32W x 75H x 15D

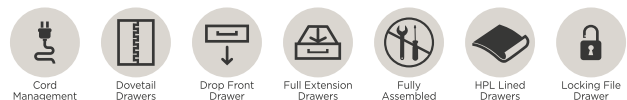
FEATURES: 2 doors, 3 adjustable shelves, cord management



WORKSTATION COMBO FILE

I3002-378 - 34W x 31H x 23D

FEATURES: High pressure laminate lined drop front keyboard drawer, utility drawer, locking file drawer, cord management



Learn **MORE** and **CONNECT** with us!

aspenhome.net

Any finishes and fabrics shown may vary in appearance and are meant as a representation. Props shown are for display purposes only and are not included.

Preston

Office I597



ah aspenhome®
see more at www.aspenhome.net



The Preston Collection

Preston offers a clean, transitional style in a gorgeous urbane grey finish with generously sized contemporary bar pull hardware. Enjoy functional features throughout such as built-in AC & USB outlets, drop front drawers, lifting desktops, tablet holders, locking file drawers, cord management and so much more.

Finish and Hardware



Urbane Grey Finish with
Contemporary Bar Pull Hardware

Built With You In Mind

- Dovetail drawer construction for long-lasting strength and durability.
- Stainless steel ball bearing drawer slides provide smooth movement and durability.
- Enjoy stylish and functional features to accommodate today's lifestyle needs.

Single Ped Desk & Return w/ Hutch
I597-307/307H/308



Features



AC & USB Outlets



Lifting Sit/Stand Desktop



Drop Front Drawers



Tablet Holders

Door Bookcase
I597-332

Door Bookcase
I597-332

Executive Desk
I597-303



LEARN MORE

Scan the QR code and click on the link to see more images and information on this aspenhome® furniture collection.

Trouble scanning? Visit qrco.de/beR5cz

ah

Preston Collection



EXECUTIVE DESK

I597-303 - 66W x 31H x 28D

FEATURES: Drop front keyboard drawer with high pressure laminate lining, 4 utility drawers, 2 locking file drawers, cord management



ADJUSTABLE HEIGHT LIFT DESK

I597-360T/IUAB-301-1 - 60W x 32-49H x 28D

FEATURES: Drop front keyboard drawer with high pressure laminate lining, 2 utility drawers, AC & USB outlets in soft close desktop compartment, electric lift mechanism, cord management



SINGLE PED DESK & RETURN W/ HUTCH

I597-307/307H/308 - 68W x 47H x 73D

FEATURES: Drop front keyboard drawer with high pressure laminate lining, 4 utility drawers, AC outlets, USB ports, 2 drop down tablet holders, locking file drawer, lifting sit/stand desktop, open shelves
*When lifting top is in the lifted position, the height is 41".



WORKSTATION COMBO FILE W/ LIFT TOP

I597-380 - 38W x 31H x 22D

FEATURES: Lifting sit/stand desktop, utility drawer, locking file drawer
*When top is in lifted position, the height is 41".



DOOR BOOKCASE

I597-332 - 32W x 75H x 15D

FEATURES: 2 doors, 3 adjustable shelves, cord management



Learn **MORE** and **CONNECT** with us!

aspenshome.net

Any finishes and fabrics shown may vary in appearance and are meant as a representation. Props shown are for display purposes only and are not included.

Hampton

Office I242



ah aspenhome®

see more at www.aspenhome.net



Hutch
I242-317

Credenza Desk
I242-316

66" Executive Desk
I242-303

Combo File
I242-378



Mod LF Hutch w/Doors
I242-385L

Mod RF Hutch w/Doors
I242-385R

Peninsula Desk
I242-344

Open Base for Peninsula Desk
I242-338

Three Drawer Base w/File
I242-341

thoughtfully designed

The Hampton Collection

Hampton offers a relaxed traditional design with a touch of modern. The dual tone black cherry finish offers contrasting tops and backs with beautiful antique gunmetal hardware making this collection an easy choice for your workspace.

Finish and Hardware



Cherry Veneer, Black Cherry Finish with Antique Gunmetal Finish Hardware

Please note some color variations of our furniture finishes and fabrics are possible due to room lighting. Please use as a reference only.

Combo File
I242-378

Adjustable Lift Desk
I242-360T/IUAB-301-1



Door Bookcase
I242-332

Open Bookcase
I242-333

Door Bookcase
I242-332

Features



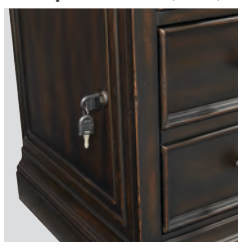
Felt lined hidden drawer in bottom right (303, 316)



Dual AC & USB outlets in desktop compartment (360T)



AC & USB charging outlets (317)



Locking file drawer holds letter or legal size files (303, 316, 378)

Quality

- Dovetail drawer construction for long lasting durability.
- Stainless steel ball bearing drawer slides to withstand long term use.



Adjustable Lift Desk
I242-360T/IUAB-301-1

See more at www.aspenhome.net



I242-317 Credenza Hutch

67W x 47H x 14D

FEATURES:

- Glass shelves, center adjustable wood shelf and storage drawer
- LED lights with touch switch underneath center molding
- Dual AC and USB charging outlets
- 2 adjustable/ removable angled shelves
- Cherry finished backing
- Cord management

I242-316 Credenza Desk

67W x 31H x 24D

FEATURES:

- 4 utility drawers, brown felt lined top drawers
- Felt lined hidden drawer (bottom right)
- File drawer holds letter or legal size files
- Cord management



I242-332 Door Bookcase

32W x 78H x 14D

FEATURES:

- 2 doors, adjustable shelves
- Cherry finished backing

I242-333 Open Bookcase

32W x 78H x 14D

FEATURES:

- Adjustable shelves
- Cherry finished backing



I242-360T Lift Desk Top (reqs IUAB-301-1)

62W x 31-48H x 30D (complete)

FEATURES:

- Dual AC and USB charging outlets in soft close desktop compartment
- Drop front keyboard drawer

IUAB-301-1 Adjustable Desk Base

FEATURES:

- Up/ down buttons to adjust height
- Select and program 3 memory positions
- Built-in reminder notifies you when it is time to change height from sitting to standing or standing to sitting



I242-303 66" Executive Desk

67W x 31H x 32D

FEATURES:

- 4 total utility drawers, brown felt lined top drawers
- Drop front center keyboard drawer with AC outlets
- Felt lined hidden drawer (bottom right)
- Locking file drawer holds letter or legal size files (bottom left)
- Cord management



I242-378 Combo File

40W x 31H x 20D

FEATURES:

- 2 utility drawers with removable dividers
- Locking file drawer holds letter or legal size files



MODULAR OFFICE Multiple configurations to choose from.

1 I242-385L Mod LF Hutch with Doors

33W x 48H x 14D

FEATURES:

- 1 adjustable shelf
- Wood/ glass option on doors
- Cord management

2 I242-385DC Mod Center Open Hutch

32W x 48H x 14D

FEATURES:

- 1 adjustable wood shelf
- 2 AC outlets
- Cord management

3 I242-385R Mod RF Hutch with Doors

33W x 48H x 14D

FEATURES:

- 1 adjustable shelf
- Wood/ glass option on doors
- Cord management

4 I242-341 Three Drawer Base with File

32W x 31H x 22D

FEATURES:

- Felt lined drop front keyboard drawer with 2 AC outlets
- Locking file drawer hold letter or legal size files
- Removable dividers

5 I242-338 Open Base for Peninsula Desk

32W x 31H x 22D

FEATURES:

- 1 adjustable shelf

6 I242-344 Peninsula Desk

49W x 31H x 32D

FEATURES:

- Dual sided work surface
- Felt lined drop front keyboard drawer

7 I242-339 One Drawer Base

32W x 31H x 22D

FEATURES:

- 1 adjustable shelf
- Drop front keyboard drawer
- 2 AC outlets



Learn **MORE** and **CONNECT** with us!

aspenhome.net

Any finishes and fabrics shown may vary in appearance and are meant as a representation. Props shown are for display purposes only and are not included.

v.051820

Grayson

Office I215



ah aspenhome®

see more at www.aspenhome.net



Workstation/Combo File
I215-379

Open Display Case
I215-333

Reversible Desk & Return
I215-307/308

Open Display Case
I215-333



66" Executive Desk
I215-303

Please note some color variations of our furniture finishes and fabrics are possible due to room lighting. Please use as a reference only.

The Grayson Collection

Grayson consists of a modern rustic styling and details that provide a mixed media contemporary look. The entire collection was engineered to provide high function and flexibility. The finish has just the right hue to fit well into any interior space and decor style. Plus all pieces are perfectly scaled for spaces small and large.

Finish and Hardware



**Pine Solids & Veneer, Cinder Grey Finish
with Rubbed Bronze Finish Hardware**

Built With You In Mind

- Dovetail drawer construction for long-lasting strength and durability.
- Stainless steel ball bearing drawer slides provide smooth movement and durability.
- Enjoy stylish and functional features to accommodate today's lifestyle needs.



Adjustable Lift Desk

I215-360T/IUAB-301-1

Open Display Case

I215-333

Open Display Case

I215-333

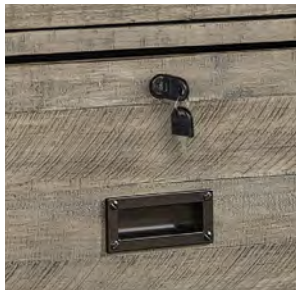
Features



AC & USB Outlets



Drop Front Drawer



Locking File Drawer



Cord Management



Workstation/Combo File

I215-379

Open Display Case

I215-333



LEARN MORE

Scan the QR code and click on the link to see more images and information on this aspenhome® furniture collection.

Trouble scanning? Visit qrco.de/beR5pn



Grayson Collection



EXECUTIVE DESK

I215-303 - 66W x 31H x 30D

FEATURES: AC outlets, drop front keyboard drawer, faux concrete surface, locking file drawers, utility drawers with removable dividers, cord management



OPEN DISPLAY CASE

I215-333 - 36W x 78H x 15D

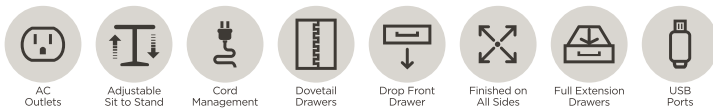
FEATURES: 5 shelves



ADJUSTABLE HEIGHT LIFT DESK

I215-360T/IUAB-301-1 - 60W x 32-49H x 30D

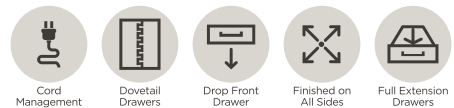
FEATURES: AC & USB outlets in soft close compartment, drop front keyboard drawer, 2 utility drawers, cord management



WRITING DESK

I215-307 - 70W x 32H x 28D

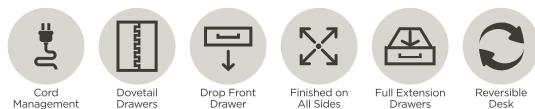
FEATURES: Drop front keyboard drawer, 2 utility drawers, cord management



L-SHAPED DESK

I215-307/308 - 78W x 32H x 70D

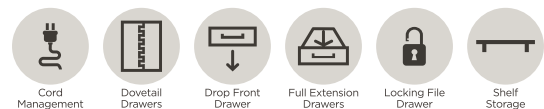
FEATURES: Drop front keyboard drawer, utility drawers, reversible desk, cord management



WORKSTATION/COMBO FILE

I215-379 - 35W x 31H x 22D

FEATURES: Drop front keyboard drawer, locking file drawer, shelf storage, cord management



Learn **MORE** and **CONNECT** with us!

aspenhome.net

Any finishes and fabrics shown may vary in appearance and are meant as a representation. Props shown are for display purposes only and are not included.

Emerson

Office I3017



ah aspenhome®

see more at www.aspenhome.net

Workstation/Combo File
I3017-378

66" Executive Desk
I3017-303

Door Bookcase
I3017-332



60" Adj. Height Lift Desk
I3017-360T/IUAB-301-1



Please note some color variations of our furniture finishes and fabrics are possible due to room lighting. Please use as a reference only.

The Emerson Collection

This collection is characterized by a transitional design in a light elm finish with metal knob hardware. Emerson contains must-have features such as built-in AC & USB outlets, drop front drawers, adjustable height controls, removable dividers, locking file drawers, generous storage, cord management and so much more.

Finish and Hardware



Light Elm Finish
with Metal Knob Hardware

Built With You In Mind

- Dovetail drawer construction for long-lasting strength and durability.
- Stainless steel ball bearing drawer slides provide smooth movement and durability.
- Enjoy stylish and functional features to accommodate today's lifestyle needs.

Corner Desk
I3017-370C



Features



AC & USB Outlets



Drop Front Drawers



Removable Dividers



Locking File Drawers

Workstation/Combo File
I3017-378



LEARN MORE

Scan the QR code and click on the link to see more images and information on this aspenhome® furniture collection.

Trouble scanning? Visit qrco.de/bf3rNb

ah

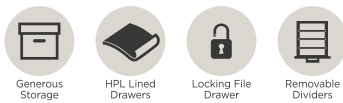
Emerson Collection



66" EXECUTIVE DESK

I3017-303 - 66W x 31H x 30D

FEATURES: High pressure laminate lined drop front keyboard drawer, 4 utility drawers, 2 high pressure laminate lined locking file drawers, AC outlets, removable dividers, cord management



60" ADJUSTABLE HEIGHT LIFT DESK

I3017-360T/IUAB-301-1 - 60W x 32-49H x 28D

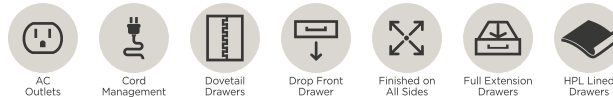
FEATURES: High pressure laminate lined drop front drawer, 2 utility drawers with removable dividers, AC & USB outlets in soft close desktop compartment, lift mechanism, cord management



CORNER DESK

I3017-370C - 60W x 31H x 60D

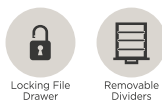
FEATURES: Drop front keyboard drawer, 2 utility drawers, high pressure laminate lining, AC outlets in corner storage compartment, cord management



WORKSTATION/COMBO FILE

I3017-378 - 38W x 31H x 23D

FEATURES: Drop front keyboard drawer, utility drawer with removable dividers, locking file drawer, high pressure laminate lining, cord management



DOOR BOOKCASE

I3017-332 - 32W x 75H x 15D

FEATURES: 2 doors, 3 adjustable shelves, cord management



Learn **MORE** and **CONNECT** with us!

aspenshome.net

Any finishes and fabrics shown may vary in appearance and are meant as a representation. Props shown are for display purposes only and are not included.

LEATHER OFFICE CHAIRS



aspenhome®

see more at www.aspenhome.net



A16-3680 Blake, Venetian Caramel

FUNCTIONAL FEATURES

Our premium top grain leather executive chairs are designed to provide optimum comfort, function, longevity, and the sophisticated elegance that only real leather and durable craftsmanship can provide. Each chair provides best-in-class, ergonomic function and support using quality materials and features from the deluxe swivel base and casters to the gas lift and knee tilt mechanism.



WOOD 5-STAR BASE



METAL 5-STAR BASE



GAS LIFT & KNEE TILT



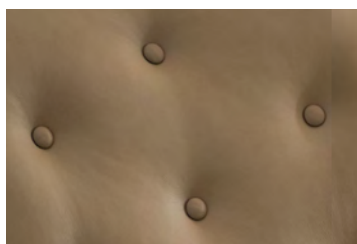
DELUXE SWIVEL CASTERS

DESIGN & AESTHETIC

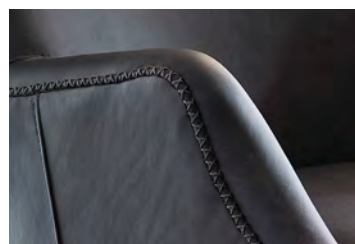
Leather office chairs instantly elevate the overall appearance of a workspace, offering luxurious appeal and curated style. Our chairs are made of durable, top grain leather using expertly crafted upholstery techniques from button tufting to hand stitching that maximizes the aesthetic. A variety of colors and styles are available which means finding the perfect chair is easier with aspenhome®.



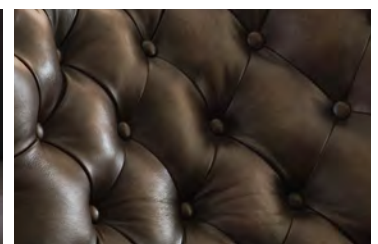
HAND APPLIED NAIL HEAD TRIM



BUTTON BACK



DETAILED STITCHING



BUTTON TUFTED BACK



A18-3681 Adler, Venetian Blue



A13-3680 Drew, Luxe Tan



SKYLAR

29W x 40H x 31D

A11-3680 Ardent Chestnut
A11-3681 Luxe White



DREW

27W x 40H x 29D

A13-3680 Luxe Tan
A13-3681 Luxe Grey



ADMIRAL

27W x 42H x 35D

A12-3680 Luxe Midnight
A12-3681 Mystic Bourbon



JEFFERSON

29W x 41H x 33D

A15-3680 Burnished Umber
A15-3681 Burnished Walnut



REESE

28W x 40H x 33D

A14-3680 Ardent Iron
A14-3681 Ardent Dove



BLAKE

26W x 34H x 30D

A16-3680 Venetian Caramel
A16-3681 Venetian Blue
A16-3682 Venetian Silver



CAMERON

26W x 34H x 30D

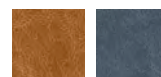
A17-3680 Ardent Onyx
A17-3681 Burnished Umber
A17-3682 Luxe Ecru



ADLER

27W x 40H x 33D

A18-3680 Venetian Caramel
A18-3681 Venetian Blue



LEARN MORE AT ASPENHOME.NET



Scan the QR code and click on the link to see more images and information on this aspenhome® furniture collection.

Trouble scanning? Visit qrco.de/bfK1gq

Please note some color variations of our furniture finishes and fabrics are possible due to room lighting. Use as a reference only.

LUXURY IN LEATHER

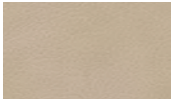
Beautiful to behold and soft to the touch, aspenhome® leathers are elegant and inviting, intending to imbibe your workspace with blissful comfort. The leather itself is vital to the style of the chair, and while all aspenhome® leathers are top grain leather, we provide options because not every leather is for everybody.

Ardent Leather Top Grain Leather

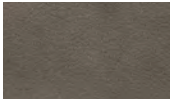
Understated grain, monochromatic colors with a protective low sheen topcoat.



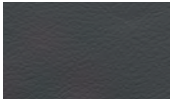
ARDENT CHESTNUT



ARDENT DOVE



ARDENT IRON



ARDENT ONYX

Burnished Leather Hand Wipe Off Semi-Aniline Top Grain Leather

Tone-on-tone facade when contrasting top and underlying colors with a stain-resistant, self-sealing finish.



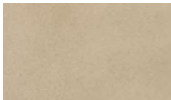
BURNISHED UMBER



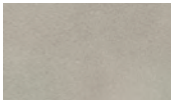
BURNISHED WALNUT

Luxe Leather Top Grain Leather

Milled grain appearance, classic colors with a light low-sheen topcoat for stain resistance.



LUXE ECRU



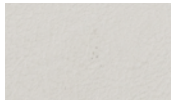
LUXE GREY



LUXE MIDNIGHT



LUXE TAN



LUXE WHITE

Mystic Leather Hand Wipe Off Semi-Aniline Top Grain Leather

Pronounced grain pattern in a rich, dark color with a top coat to resist stains.



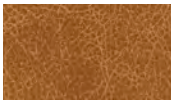
MYSTIC BOURBON

Venetian Leather Dual-Tone Cracked Semi-Aniline Top Grain Leather

Distinctive web patterning with a protective low sheen finish.



VENETIAN BLUE



VENETIAN CARAMEL



VENETIAN SILVER

A11-3680	Skylar Exec Chair	Ardent Chestnut
A11-3681	Skylar Exec Chair	Luxe White
A12-3680	Admiral Exec Chair	Mystic Bourbon
A12-3681	Admiral Exec Chair	Luxe Midnight
A13-3680	Drew Exec Chair	Luxe Tan
A13-3681	Drew Exec Chair	Luxe Grey
A14-3680	Reese Exec Chair	Ardent Iron
A14-3681	Reese Exec Chair	Ardent Dove
A15-3680	Jefferson Exec Chair	Burnished Umber

A15-3681	Jefferson Exec Chair	Burnished Walnut
A16-3680	Blake Exec Chair	Venetian Caramel
A16-3681	Blake Exec Chair	Venetian Blue
A16-3682	Blake Exec Chair	Venetian Silver
A17-3680	Cameron Exec Chair	Ardent Onyx
A17-3681	Cameron Exec Chair	Burnished Umber
A17-3682	Cameron Exec Chair	Luxe Ecru
A18-3680	Adler Exec Chair	Venetian Caramel
A18-3681	Adler Exec Chair	Venetian Blue



Learn **MORE** and **CONNECT** with us!

aspenhome.net

Any finishes and fabrics shown may vary in appearance and are meant as a representation. Props shown are for display purposes only and are not included.